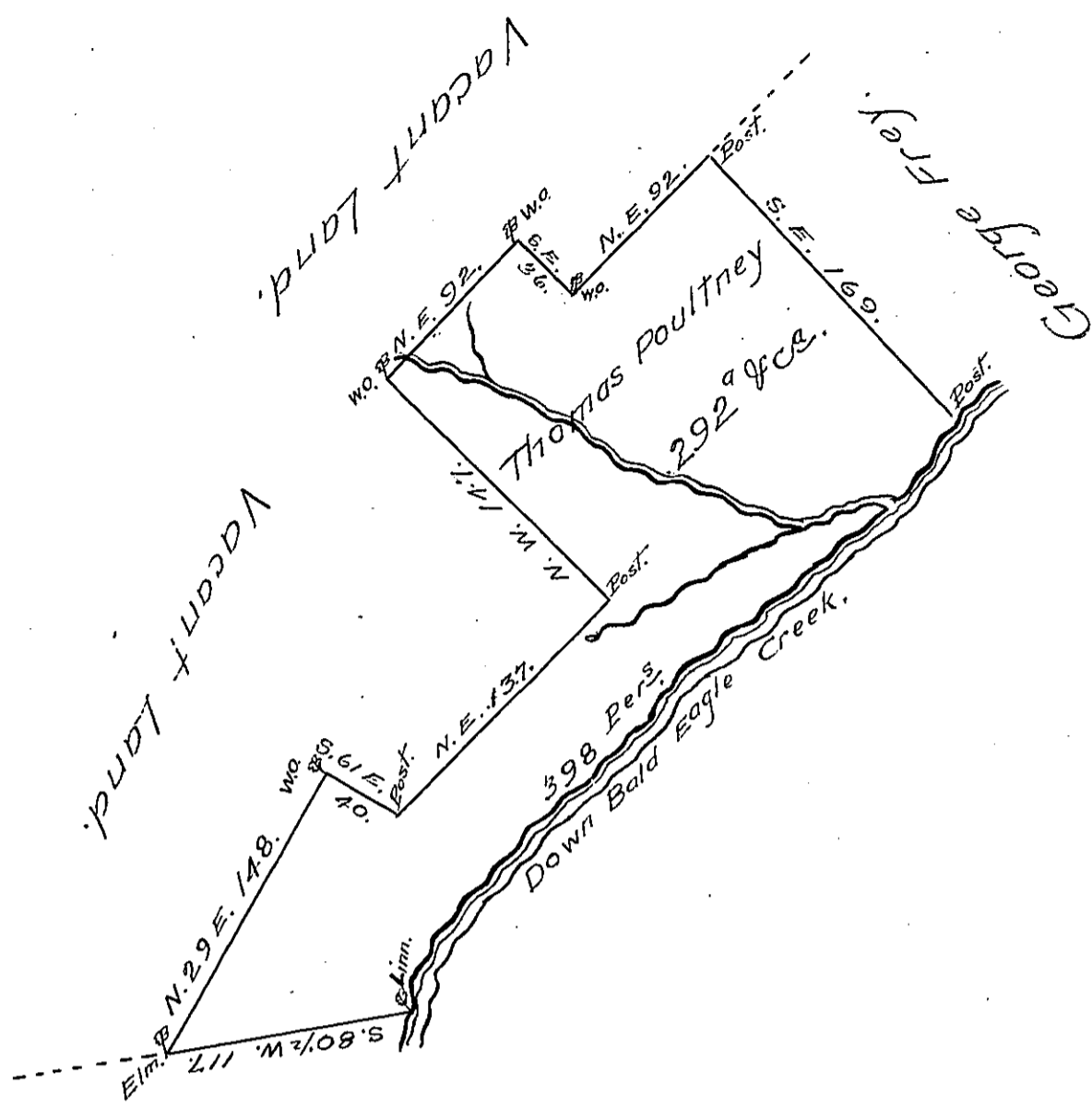


FORM NO. 1.



Thomas Smith.

A Draught of a Tract of Land situate on Bald Eagle Creek on the South Side of the West Branch of Susquehanna, in the County of Cumberland called _____ Surveyed the 21st day of July 1769. To Thomas Poultney in pursuance of an Application No. 2 dated the 3^d of April 1769. Containing Two hundred and Ninety Two acres and Allowance of six acres P^l. Cent for Roads &c.

Chas. Lukens D.S.

To John Lukens Esq^r
Surveyor General.

IN TESTIMONY that the above is a copy of the original remaining on file in the Department of Internal Affairs of Pennsylvania, made conformably to an Act of Assembly approved the 16th day of February, 1833, I have hereunto set my Hand and caused the Seal of said Department to be affixed at Harrisburg, this Twenty third day of April 1906.

Isaac D. Brown
Secretary of Internal Affairs.